

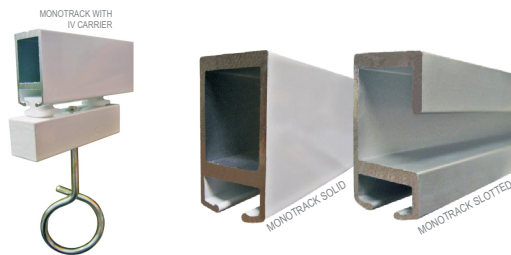
architecturalspecifications

IV (INTRAVENOUS) EQUIPMENT

IV COMPONENTS

The oval installation is good for operating rooms and intensive care giving complete freedom of movement around beds wherever it is installed for intravenous feeding.

The IV Carrier is fitted with 2 nylon wheels and is constructed to create a 5 point suspension system with a stainless steel safety hook attached to the carrier body.



The intravenous track and carrier are normally supplied and installed as a 'U' shape track in half the width of the bed. This then allows up to 5 intravenous drip systems to drop to the patient without interference.

IV CARRIERS



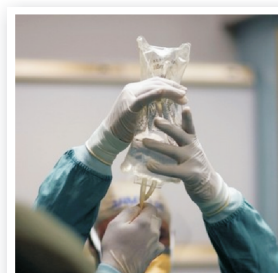
IV Tree Carrier
10497 Silver



IV Tree Carrier
10498 White



Self Locking IV Trolley
10499 Silver



IV TREE

Five Point IV Tree
Adjustable, 10500
900mm Extension
and 10501
1200mm Extension.